

Micro Control Systems

APPLICATION NOTE

APP-092

MCS Cradlepoint Installation

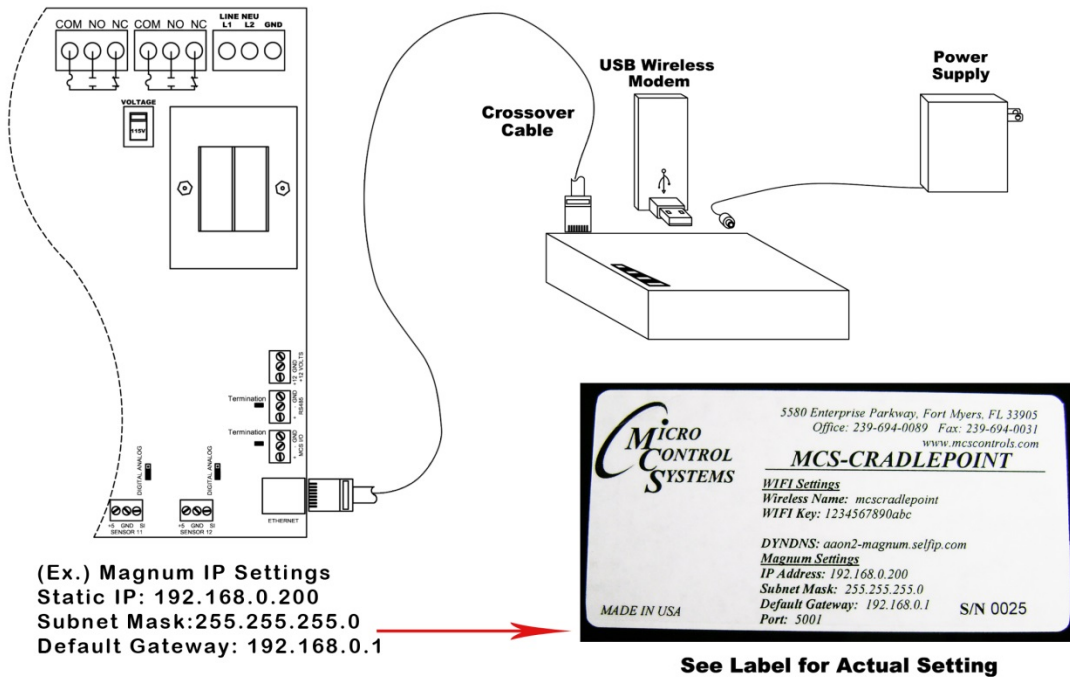
Revision History

Date	Author	Description
------	--------	-------------

07/18/2014	Emmanuel Castillo	Created application note
------------	-------------------	--------------------------

*Prior to installing the MCS-Cradlepoint you must purchase a USB modem and data plan from a data plan provider. We highly recommend Verizon wireless (**We do not support At&t**). You must also make sure to have the carrier provide you with a static IP.

*The list of supported USB devices are found at the bottom of this Manual.



The MCS-MAGNUM IP address can be verified and changed (with the proper authorization code) from the MCS-Magnum's keypad/LCD of a live unit.

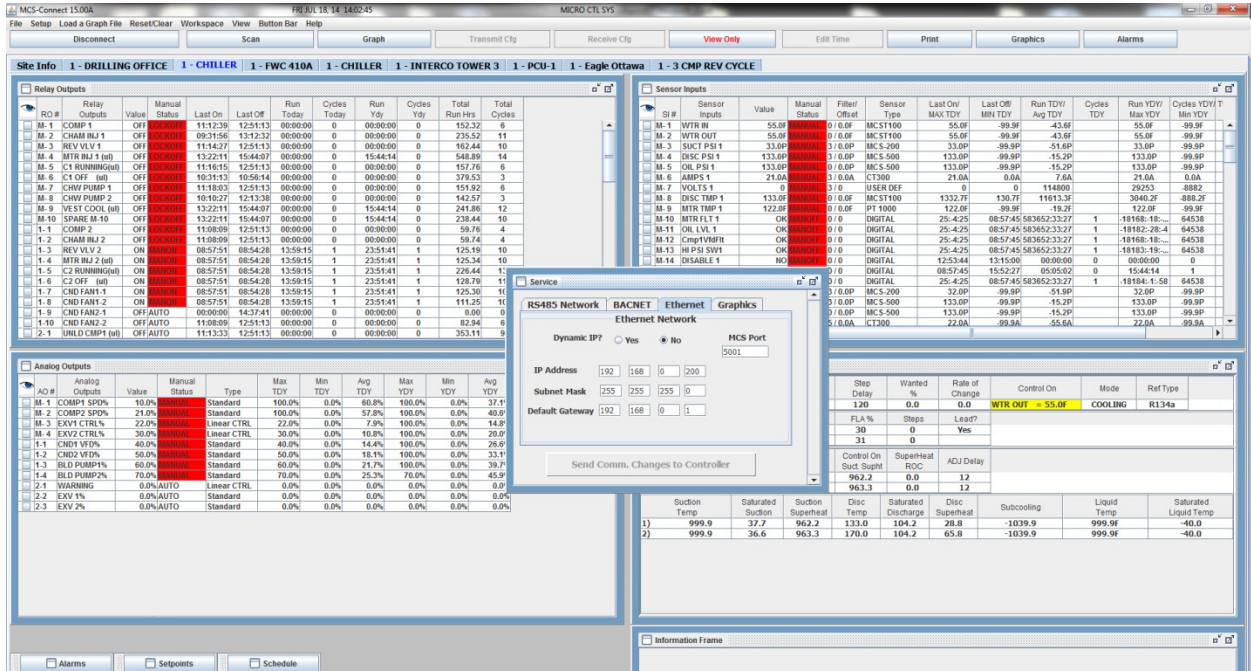
The following steps will display the IP Address settings:
 (to change the address you first must be authorized)

1. Press the MENU key and then Using ← → ↑ or ↓ keys, select Serv Tools then press the ENTER key.
2. Then Using ↑ or ↓ keys, scroll to Ethernet Network then press Enter.
3. Using ↑ or ↓ keys, position cursor to Dynamic IP then press Enter.
4. Using the ↑ ↓ keys, set Dyanmic IP to No and press enter.
5. Then using ↑ ↓ keys, scroll to IP address then press Enter.

6. Using \uparrow \downarrow keys to increase and decrease the first set of values then use the \rightarrow key to select the next set of numbers. Use \uparrow \downarrow keys to increase and decrease the second value and repeat the previous steps for the rest of the IP address. Once you have set the desired address press the Enter key.

7. Repeat steps 5 and 6 for the Subnet Mask and Default Gateway.

8. This can also be accomplished through MCS-Connect via the service window, under the Ethernet tab.



9. Reset or cycle power to the magnum for the new address to take effect.

Supported Phone Modems/Handsets

USB Modems

AnyDATA ADU-555C ("M-Blaze Premium") / MTS (India)

AxxessTel MV240 / Cellcom (USA)

BandLuxe C330 / Claro (Puerto Rico)

Calcomp a600 / Cricket (USA)

Capitel CWU720 / Airtel (India)

CradlePoint MC100E-SP / Sprint (USA) / Supported on CBA750

CradlePoint MC100E-VZ / Verizon (USA) / Supported on CBA750

CradlePoint MC100W / Clear (USA) / Supported on CBA750

CradlePoint MC100W / Sprint (USA) / Supported on CBA750

CradlePoint MC200LE-VZ / Verizon (USA) (GPS, Modem - see Known Issues) / Supported
on CBA750

EpiValley SEC 8380 / Tata Teleservices (India)

EpiValley SXC-1080 / Tata Teleservices (India)

Franklin CDU-680 / nTelos (USA) (GPS - see Known Issues)

Franklin CDU-680 / Pioneer Wireless (USA) (GPS - see Known Issues)

Franklin S600C / Sprint (USA)

Franklin U210 / Strata Networks (USA)

Franklin U300 ("Clear 4G+ USB Modem") / Clear (USA)

Franklin U300 (CMU-300) ("Comcast High Speed 2go") / Comcast (USA)

Franklin U300 ("Sprint 3G/4G USB Modem U300") / Sprint (USA)

Franklin U300 ("Road Runner Franklin U300") / Time Warner Cable (USA)

Franklin U301 (CMU-301) ("Comcast High Speed 2go") / Comcast (USA)

Franklin U301 ("Sprint 3G/4G USB Modem U301") / Sprint (USA) (3G Activation, PRL
Update)

Franklin U301 ("Road Runner Franklin U301") / Time Warner Cable (USA)

Franklin U600 / Sprint (USA) (3G Activation, PRL Update, FUMO, GPS)

Huawei D02HW / EMOBILE (Japan)

Huawei D21HW / EMOBILE (Japan)

Huawei D22HW / EMOBILE (Japan)

Huawei E153 / Airtel (India)

Huawei E1550 / Tele2 (Sweden)

Huawei E1550 / Telenor (Sweden)

Huawei E1550 / "3" (Sweden)

Huawei E156G / "3" (UK)

Huawei E160E / Orange (UK)

Huawei E1691 ("T-Mobile webConnect Jet USB") (UMG1691) / T-Mobile (USA)

Huawei E173 / Reliance (India)

Huawei E1731 / Airtel (India)

Huawei E1732 / Idea Cellular (India)

Huawei E1750 / Telia (Sweden)

Huawei E1750 / Tele2 (Sweden)

Huawei E1750 / Telenor (Sweden)

Huawei E1750 / T-Mobile (UK)

Huawei E1752 / Orange (UK)

Huawei E177 / Tata Docomo (India)

Huawei E181 ("T-Mobile webConnect USB") (UMG181) / T-Mobile (USA)

Huawei E1815 ("USBConnect 900") / AT&T (USA)

Huawei E182E / Telus (Canada)

Huawei E182E / "3" (Sweden)

Huawei E1831 (webConnect Rocket USB) (UMG1831) / T-Mobile (USA)

Huawei E220 / AT&T (USA)

Huawei E367 / Idea Cellular (India)

Huawei E367 / Tata Docomo (India)

Huawei E367 / T-Mobile (UK)

Huawei E368 ("AT&T USBConnect Force 4G") / AT&T (USA) (Modem - see Known Issues)

Huawei E372 / Telus (Canada) (Modem - see Known Issues)

Huawei E398 / Tele2 (Sweden)

Huawei EC1261 / Tata Teleservices (India)

Huawei EC1262 / Reliance (India)

Huawei EC150 / Reliance (India)

Huawei EC156 / Tata Photon (India)

Huawei EC168 / Alltel (USA)

Huawei EC168 / Verizon (USA)

Huawei EC168C / Tata Teleservices (India)

Huawei EC168C / Reliance (India)

Huawei EC1705 / Cricket (USA)

Huawei EC228 / Alltel (USA)

Huawei EC306 / Tata Photon (India)

Huawei FWH-USB0328 ("4G Mobile USB Series H") / Clear (USA)

Huawei K3565 (E180) / Vodafone (UK)

Huawei K4505 ("Vodafone Modem Stick Pro") / Vodafone (UK)

Huawei UMG366 ("T-Mobile Jet 2.0") / T-Mobile (USA)

LG AD600 ("AT&T USBConnect Adrenaline") / AT&T (USA) - additional support for latest
modem firmware

LG L-02A / AT&T (USA)

LG L-02A ("NTT DoCoMo L-02A") / DoCoMo (Japan)

LG L-02C / NTT DoCoMo (Japan)

LG L-05A / NTT DoCoMo (Japan)

LG Turbo LUU-2100TI / AT&T (USA) / Supported on MBR1200, MBR900, MBR90, CBA750,

CX111 only

LG VL600 ("4G LTE") / Verizon (USA) (Modem - see Known Issues)

Linktop LW272 / BSNL/MTNL (India)

Linktop LW273 / BSNL/MTNL (India)

Longcheer C01LC / Softbank (Japan)

Longcheer D11LC / EMOBILE (Japan)

Longcheer D12LC / EMOBILE (Japan)

Longcheer D21LC / EMOBILE (Japan)

Micromax MMX 300C / BSNL (India)

Micromax MMX 352G / Aircel (India)

Motorola USBw 100 (25w100) ("Clear USB Modem") / Clear (USA)

Motorola USBw 100 (25w100) / Time Warner Cable (USA)

Nokia CS-18 ("HSPA+ Rocket Mobile Internet Stick") / Rogers (Canada)

Novatel MC551 ("Verizon USB551L") / Verizon (USA) (Modem - see Known Issues)

Novatel MC720 ("Verizon USB720") / Verizon (USA)

Novatel MC727 ("Verizon USB727") / Verizon (USA)

Novatel MC760 ("Novatel U760") / Bell Mobility (Canada)

Novatel MC760 / Cellcom (USA)

Novatel MC760 / Comcast (USA)

Novatel MC760 ("Sprint U760") / Sprint (USA) (3G Activation, PRL Update, GPS - see Known Issues)

Novatel MC760 ("Verizon USB760") / Verizon (USA) (3G Activation, GPS - see Known Issues)

Novatel MC760 ("Virgin Mobile Ovation MC760") / Virgin Mobile (USA)

Novatel MC930D / AT&T (USA)

Novatel MC950D / AT&T (USA)

Novatel MC998D ("U998 HSPA+ Turbo Stick") / Bell Mobility (Canada)

Novatel MiFi 2200 / Sprint (USA)

Novatel MiFi 2200 / Verizon (USA)

Novatel U547("4G Novatel Wireless U547 Turbo Stick") / Bell Mobility (Canada)

Option iCON 322 ("AT&T USBConnect Quicksilver") / AT&T (USA) * (see Known Issues)

Option iCON 461 ("AT&T USBConnect Velocity") / AT&T (USA)

Option iCON 515M ("GI1515") / Orange (UK)

Pantech UM100 / Cricket (USA)

Pantech UM150 / Alltel (USA)

Pantech UM150 / Verizon (USA)

Pantech UM175 / Alltel (USA)

Pantech UM175 / U.S. Cellular (USA)

Pantech UM175 / Verizon (USA)

Pantech UM185 / Alltel (USA)

Pantech UM185 / Cricket (USA)

Pantech UM185 / U.S. Cellular (USA)

Pantech UML290VW ("4G LTE") / Verizon (USA) - additional support for latest modem
firmware

Pantech UMW190VZ / Verizon (USA)

Pantech UMW190NCD / Verizon (USA)

Sierra Wireless 250U / Sprint (USA) (3G Activation, PRL Update, FUMO, HFA)

Sierra Wireless 250U / Clear (USA)

Sierra Wireless 250U / Time Warner Cable (USA)

Sierra Wireless 305 USB ("AT&T USBConnect Lightning") / AT&T (USA)

Sierra Wireless 306 USB / AT&T (USA)

Sierra Wireless 306 USB / Telus (Canada)

Sierra Wireless 313U ("AT&T USBConnect Momentum 4G") / AT&T (USA)

Sierra Wireless 595U USB / Sprint (USA) (GPS - see Known Issues)

Sierra Wireless 595U USB / Telus (Canada)

Sierra Wireless 595U USB / Verizon (USA)

Sierra Wireless AirCard 308 USB / Rogers (Canada)

Sierra Wireless AirCard 308 ("AT&T USBConnect Shockwave") / AT&T (USA)

Sierra Wireless AirCard 319U / Telus (Canada)

Sierra Wireless Compass 597U / Sprint (USA) (GPS - see Known Issues)

Sierra Wireless Compass 597U / Telus (Canada)

Sierra Wireless Compass 598U / Pioneer Wireless (USA) (GPS - see Known Issues)

Sierra Wireless Compass 598U / Sprint (USA) (3G Activation, PRL Update, FUMO, HFA,

GPS - see Known Issues)

Sierra Wireless Compass 598U / Telus (Canada) (GPS - see Known Issues)

Sierra Wireless 875U / AT&T (USA)

Sierra Wireless 880U / AT&T (USA)

Sierra Wireless 881U ("AT&T USBConnect 881") / AT&T (USA)

Sierra Wireless Compass 885 (885U) ("AT&T USBConnect Mercury") / AT&T (USA)

Sierra Wireless Compass 888 / AT&T (USA)

Sierra Wireless Compass 889 / O2 (UK)

TCT Mobile X220Y ("One Touch X220Y") / Claro (Puerto Rico)

Ubee PXU1900 ("Clear 4G Mobile USB") / Clear (USA)

Ubee PXU1903 / Comcast (USA)

Ubee PXU1930 ("Rover Stick") / Rover (USA)

Ubee U1901SP / Sprint (USA)

Verykool M950 / Claro (Puerto Rico)

Zoom ZM0620 ("Zoom 4695") / Claro (Puerto Rico)

ZTE A605 / Cricket (USA)

ZTE AC2726 / Reliance (India)

ZTE AC2746 / MTS (India)

ZTE AC2766 ("M-Blaze Standard") / MTS (India)

ZTE K3570-Z / Vodafone (UK)

ZTE MF100 / O2 (UK)

ZTE MF112 / "3" (UK)

ZTE MF190 / Reliance (India)

ZTE MF192 / T-Mobile (UK)

ZTE MF626 ("B-Mobile 3G") / B-Mobile (Japan)

ZTE MF631 / Tata Docomo (India)

ZTE MF636 / Orange (UK)

ZTE MF636 ("Rogers HSPA Rocket Stick") / Rogers (Canada)

ZTE MF637 / T-Mobile (UK)

ZTE MF668 / Reliance (India)

ZTE MF668 ("Rogers HSPA+ Rocket Stick") / Rogers (Canada)

ZTE MF683 ("T-Mobile Rocket 3.0 4G Laptop Stick") / T-Mobile (USA) (Modem - see Known Issues)

ZTE MF691 ("T-Mobile webConnect Rocket 2.0") / T-Mobile (USA)

ZTE TU25 / Comcast (USA)

ZTE TU25 / Digital Bridge (USA)*

ExpressCard Modems (Requires an ExpressCard-to-USB adaptor)

Huawei E870 / AT&T (USA)

Huawei E881 / Orange (UK)

Kyocera KPC680 / nTelos (USA)

Kyocera KPC680 / Verizon (USA)

Novatel CC208 ("Merlin CC208 3G/4G 2-in-1 Card") / Sprint (USA) (3G Activation, PRL Update, FUMO)

Novatel CC760 ("Sprint C777") / Sprint (USA) (3G Activation, PRL Update)

Novatel CC760 ("Verizon PC770") / Verizon (USA) (GPS - see Known Issues)

Novatel X720 ("Sprint EX720") / Sprint (USA) (GPS - see Known Issues)

Novatel X720 ("Verizon V740") / Verizon (USA)

Novatel X950D / AT&T (USA)

Option GlobeTrotter Express 442 (GE442) / T-Mobile (USA)

Option GT Max 3.6 Express / AT&T (USA) *

Option GlobeTrotter Express HSUPA ("GT Ultra Express") / AT&T (USA)

Note: Requires an ExpressCard-to-USB adapter that provides 1.2V

Sierra Wireless 402 / Pioneer Wireless (USA)

Sierra Wireless 402 / Sprint (USA) (3G Activation, PRL Update, FUMO)

Sierra Wireless 503 (“HSPA+ Rocket AirCard”) / Rogers (Canada)

Sierra Wireless 504 (“AirCard 890”) / AT&T (USA) - additional support for latest modem
firmware

Sierra Wireless 597E / Sprint (USA) (GPS - see Known Issues)

Sierra Wireless 597E / Telus (Canada)

Sierra Wireless 880E / AT&T (USA)

PCCard modems (MBR1200 only):

Novatel Merlin CC760 (“Sprint S720”) / Sprint (USA)

Pantech PC5750 (“Verizon PC5750”) / Verizon (USA)

Sierra Wireless AirCard 595 / Sprint (USA)

Sierra Wireless AirCard 595 / Verizon (USA)

Notes:

*Devices marked as AT&T were tested using the AT&T network in the United States. The
device may or may not work with other UMTS/GSM carriers internationally.